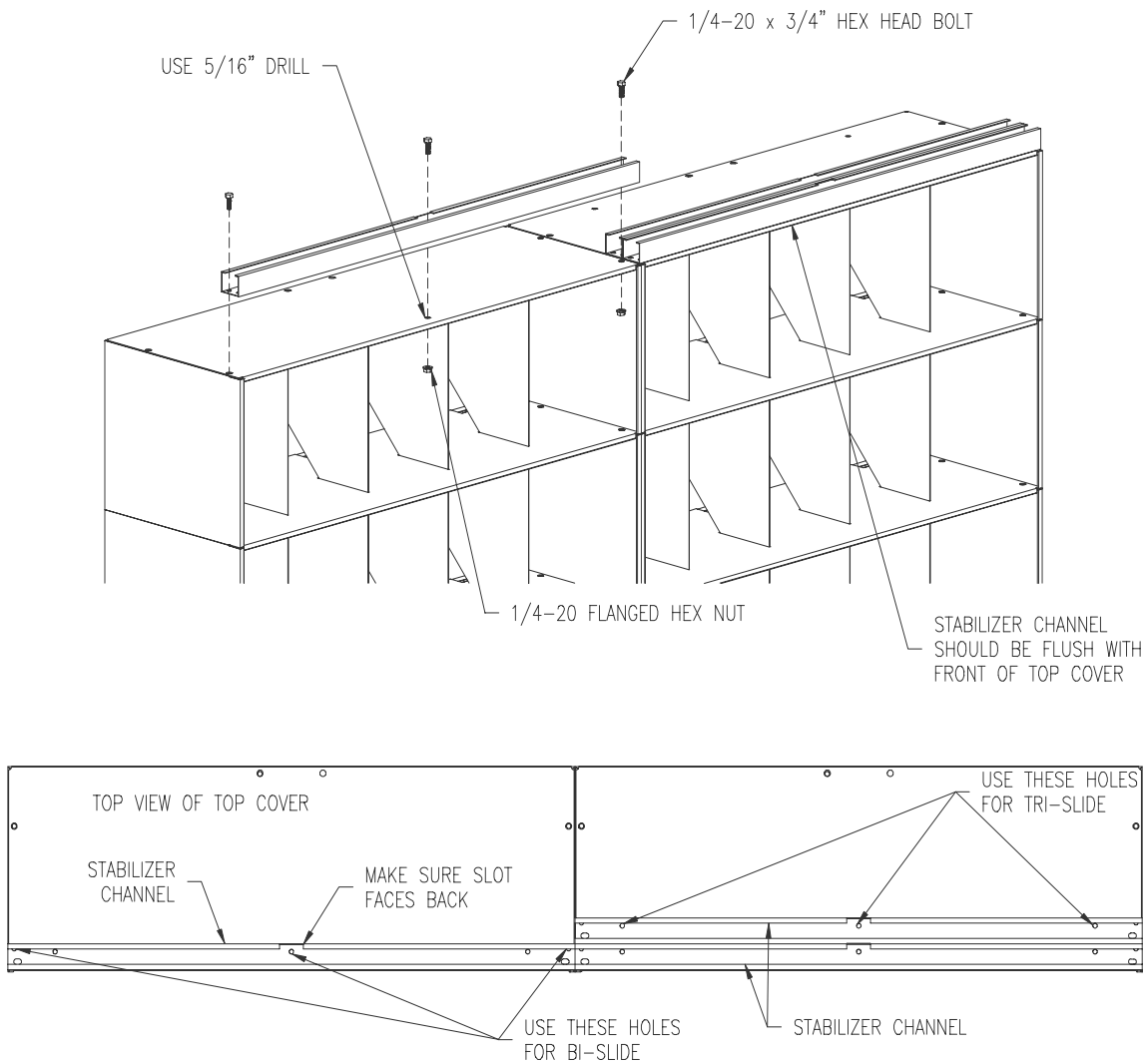


Stabilizer Channel & Roller Bracket Mounting Instructions For Vu-Stak™ Tiers

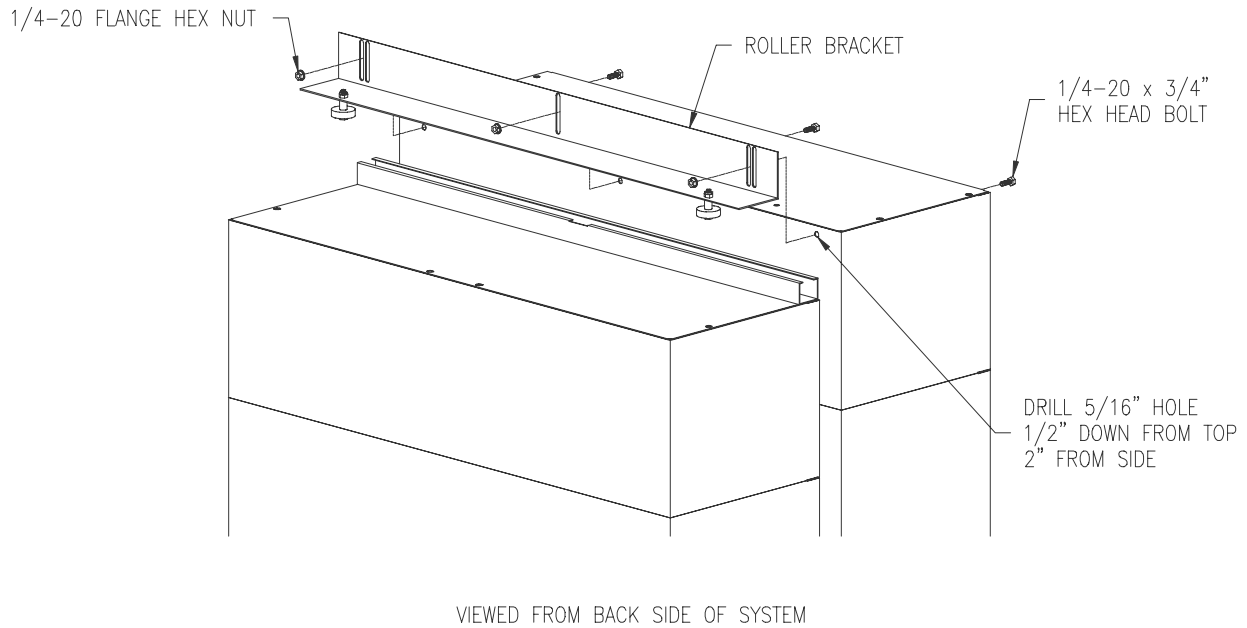
-Attaching Top Stabilizer Channels to Vu-Stak™ Tiers:

- 1.) These steps will replace Step 2 and Step 2A in the Datum™ Bi/Tri Slider Instructions. Start by assembling the stationary sections according to the instructions supplied with the tiers. However, when you are ready to attach the top cover do not use drive rivets in the front most holes (these will be used to attach the stabilizer channel). Position the top stabilizer channel on the tops of the stationary sections. Make sure slot on top of stabilizer channel is facing back and outer most holes on stabilizer channel align with front most holes on top cover (front of stabilizer channel should be flush with front of top cover). Attach the channel using two (2) 1/4-20 x 3/4" bolts and nuts. Mark the position of the center hole in the stabilizer channel on the top cover and drill a 5/16" hole and secure with another 1/4-20 x 3/4" bolt and nut. Repeat for each rear stationary section.
- 2.) FOR TRI-SLIDER SYSTEM ONLY. Follow directions in step 1; however, position a second row of top stabilizer channels directly in back of the first row. Use a marker or punch to mark the three (3) inner most hole locations in the channel on the top cover. Drill holes in the top cover where marked using a 5/16" drill. Use three (3) 1/4-20 x 3/4" nuts and bolts to secure. Repeat for each additional rear stationary section.



-Attaching Roller Bracket to Vu-Stak™ Tiers:

- 1.) These steps will replace Step 14 and Step 14A in the Datum™ Bi/Tri slider Instructions. Mount a roller bracket to the top of each Bi-Slider rolling section. Drill two (2) 5/16" holes in the top most tier 1/2" down from the top and 2" in from the side and drill one (1) hole in the center of the tier 1/2" down from the top. Using three (3) 1/4-20 x 3/4" hex head bolts and three (3) 1/4-20 flanged hex nuts attach the roller bracket to the tier as shown in the figure below.



- 2.) TRI-SLIDER SYSTEM ONLY. Position hat channel on front rolling section with rear flange of hat channel 1/4" from the back of the top cover. Mark the position of the holes in the flanges of the hat channel on the top cover with a marker or punch. Drill holes in the top cover with a 5/16" drill where marked. Attach the hat channel with eight (8) 1/4-20 x 3/4" hex head bolts and 1/4-20 flanged hex nuts. Attach tri-slider top stabilizer bracket to hat channel using four (4) 1/4-20 bolts.

