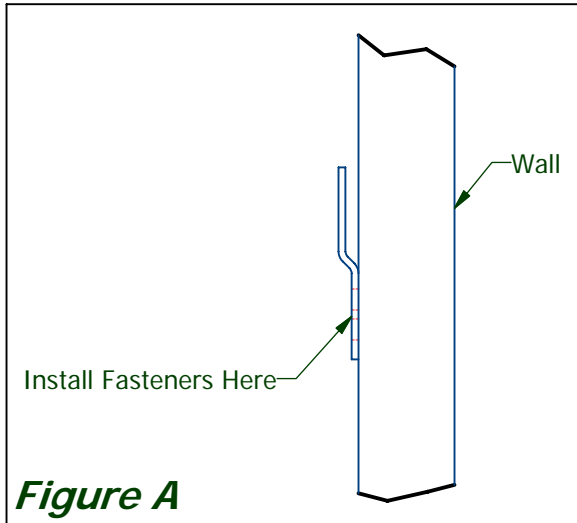


# WALL HUNG SORT MODULE INSTALLATION INSTRUCTIONS

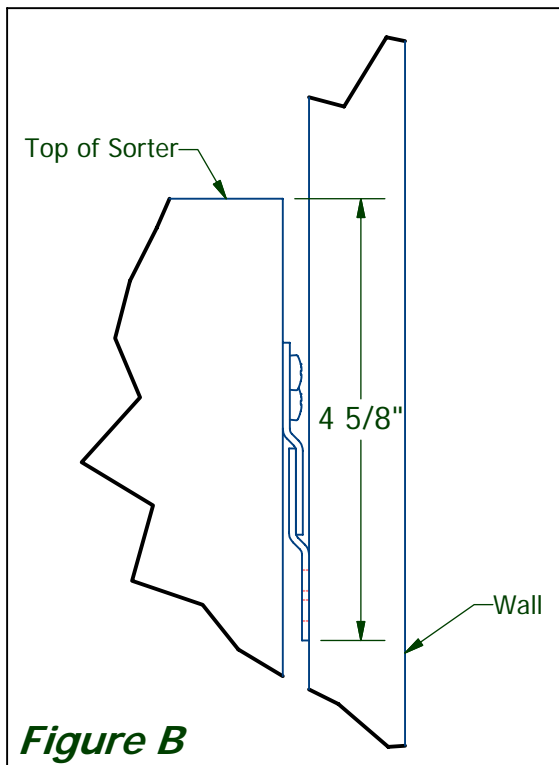


## **NOTE**

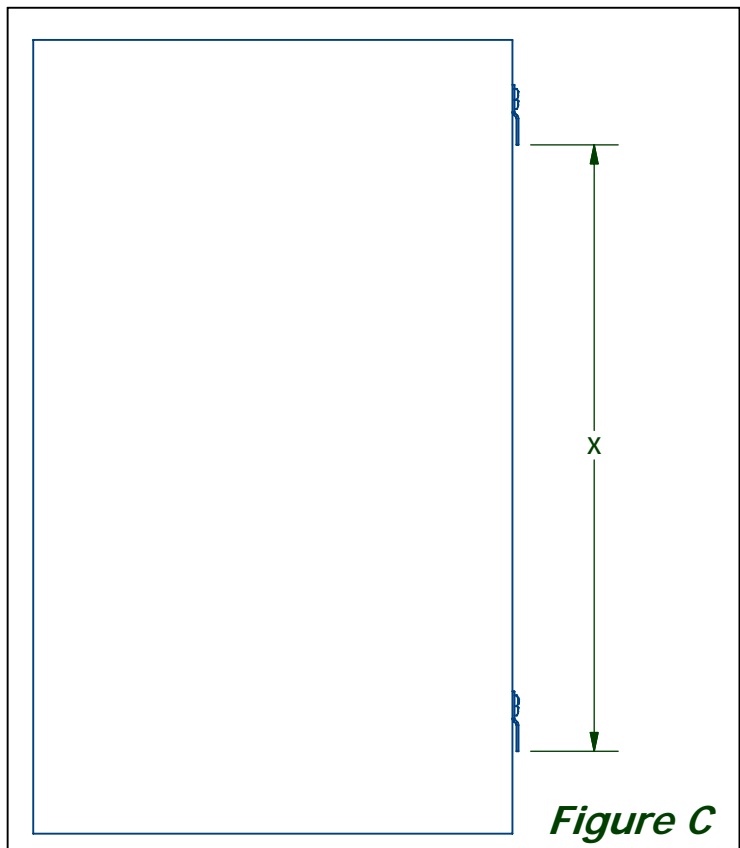
Fasteners to secure unit to wall must be supplied by others. Be sure appropriate fastener is used to accommodate loaded unit.

**Step 1:** To install Sorter at a desired height, mount a Bracket at the desired height minus  $4\frac{5}{8}$ ".

**For example:** If the desired height from the floor to the top of the sorter is 70", the first Bracket will be secured to the wall with the at approximately  $65\frac{3}{8}$ " from the floor. See **Figure A & B**.



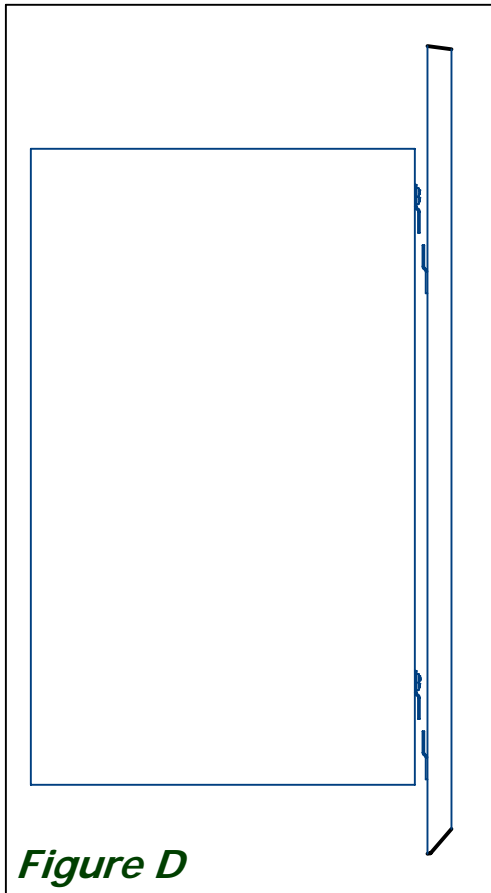
**Step 2:** Measure the distance using a common point from the top Bracket to the bottom Bracket on the Sorter. See **Figure C**.



# WALL HUNG SORT MODULE INSTALLATION INSTRUCTIONS

**Step 3:** Install the second Bracket to the wall. Positioning should be determined by the distance that was measured in **Step 2**.

**Step 4:** Place the Sorter on the brackets mounted to the wall. See *Figure D*.



*Figure D*

For installation questions, please call 1-866-217-0330.